

# ESSENTIA

VAN



Essential for courier transport



more info at  
[www.lecitrailer.com](http://www.lecitrailer.com)



**LeciTrailer**

## DIMENSIONS

- › Length: 13,690 mm
- › Width: 2,550 mm
- › Total Height: 4,000 mm
- › Fifth Wheel Height: 1,100 mm to 1,200 mm
- › Distance to king-pin: 1,650 mm.

## STRUCTURE

- › I-shaped longitudinal members with variable depth, made of high tensile strength steel.
- › IPEA-80 cross members at a 400mm distance.
- › 120mm neck. ISO 1726 Standard.
- › Side walls in cold-rolled profile, prepared to house the load fastening grommets.
- › Steel rear bumper.

## AXLES / SUSPENSION

- › 3 axles.
- › Disc brake.
- › Pneumatic suspension driven by 5 ways valve.

## BRAKES

- › CE approved two-circuit brake installation.
- › ISO coupling heads with integrated filter.
- › EBS+RSS with 1 axle with sensors. Roll over protection system

## TYRES

- › 6 tyres. Dimension 385/65 R 22.5.
- › Basket-type spare wheel carrier.
- › Wheel spanner

## LANDING LEGS

- › Two-speed

## ELECTRICAL INSTALLATION

- › 24V armoured electrical installation.
- › 3 ISO connectors: 2 of 7 poles and 1 of 15 poles.
- › 7-services optical group with registration plate support.
- › Reverse gear alarm.
- › Side LED gauge. Top gauges.
- › High visibility side and rear outline markings compliant with standards 48 and 104.

## FINISHINGS

- › Metallic structure of the chassis shot blasted with SA 21/2 quality.
- › Protection treatment against rust of the chassis by complete immersion and electro-deposition cathode (KTL) with nano-technological conversion. This challenging last generation process guarantees a uniform layer on the entire surface of the 50 micron KTL printing chassis.
- › Finishing with acrylic-polyurethane enamel (two-component painting) in RAL colour to be agreed and dry in temperature controlled oven.
- › White plywood panels.

## BODY

- › Inner height: 2,700 mm
- › Useful length: 13,580 mm
- › Useful width: 2,480 mm
- › Wooden floor with plywood board, phenolic coating, forklift max load 7,100Kg according to standard DIN EN 283, with galvanised steel omegas.
- › Protection plate for forklift access
- › Modular trailer structure integrated by:
  - Reinforced steel front panel for forklift impact, painted in White RAL 9010, closed with 20mm Plywood panel.
  - Rear galvanised frame, integral framework body with reinforced band for spring impact.
  - 20 mm Plywood sidewalls and 300mm high interior kick ship profile made of galvanised sheet.
- › Insulated sandwich panel roof.
- › Plywood rear doors with 2 container-type roller shutter door.
- › 1 load sparing rail per side, at 1,100 height.

## ACCESSORIES

- › 3 Interior lamps
- › Mudguard system as per current regulations.
- › Toolbox. › Water tank.
- › Rubber buffers › Quad and corner protection.
- › Rear ladder. › Wheel chock
- › Folding cyclist side protection. › Fire-extinguisher box.

## OPTIONS

- › 600 mm galvanised steel sheet on inside, from base plate to the tie rail.
- › Plywood rear doors with 4 exterior Locking gear.
- › Doors with four built-in roller shutter .
- › Sheet metaln door whit outside locking gear.
- › Double deck.
- › Translucent polyester roof.



Front: galvanised monoblock structure +KTL



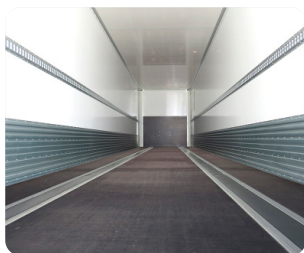
Roller shutter door



Embedded locking gear



Outside locking gear



Plinth and tie-down rail



Optional double floor and polyester roof



Quad and corner protection



Forklift access plate